

ROLLWAY®

Roller Bearings for Metal Industry



A Regal Brand

REGAL

Anti-Friction Bearings

Since the introduction of Anti-Friction bearings into rolling mills in the 1920's **ROLLWAY** has been providing high quality engineered roller bearing products to keep the mills producing efficiently. Since the 1920's roller bearing technology has changed dramatically and **ROLLWAY** has been there leading the way. **ROLLWAY** was the first bearing company to offer vacuum degassed steel and crowned rollers on all standard products.

Today **ROLLWAY** is still manufacturing some of the highest quality bearings obtainable. Our components are made from the finest bearing grade steel available, manufactured in the most efficient manner in a modern facility by some of the highest skilled workers in the industry.

Whether you are looking for a cylindrical mill support bearing or a bearing for use on your rolling mill, **ROLLWAY** is able to offer an interchange product or a complete new design to keep the mill running.



ROLLWAY Offers A Wide Variety of Cylindrical Roller Bearings For Rolling Mill Applications

Mill Support Products - most mill support products are available from stock:

- ✓ **Table Roll Bearings**
- ✓ **Line Shaft Bearings**
- ✓ **Mill Motor Bearings**

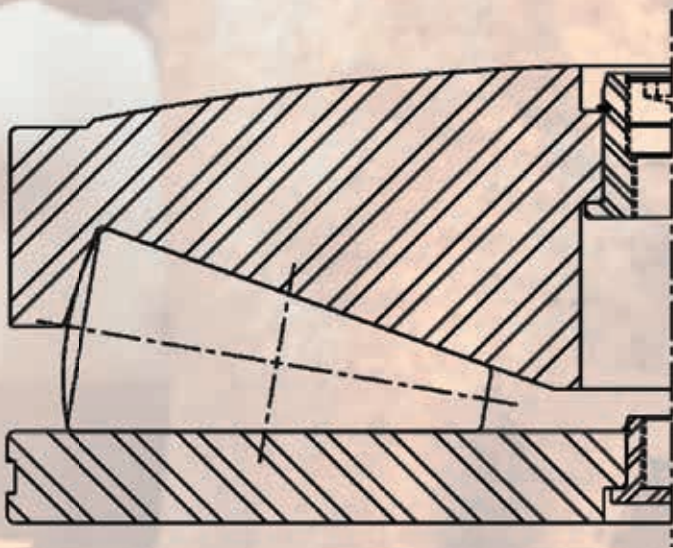
Mill Stand Applications - ROLLWAY has the capabilities for the design and production of cylindrical roller bearings used on mill stands:

- ✓ **Cylindrical Roll Neck Bearings**
- ✓ **Screw Down Thrust Bearings**

Mill Stand Bearings

Can be provided as interchange products or Engineered to Order. Contact ROLLWAY customer service for available sizes or quotes. We will be happy to quote on any of the following product types:

Cylindrical Roll Neck Designs available up to 1,067mm Outside Diameter



Screw Down Thrust Bearings Cylindrical Roller or Tapered Roller Designs available

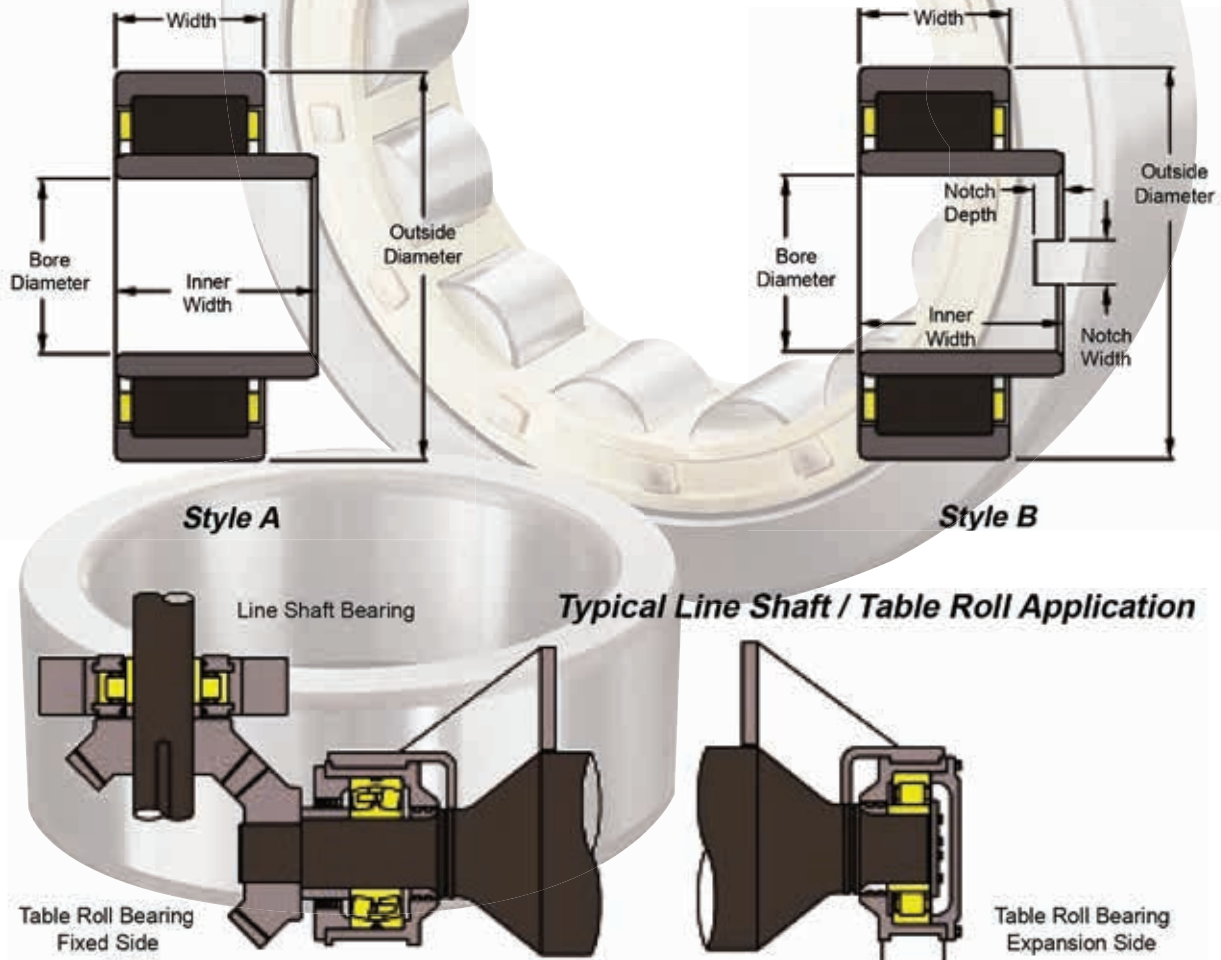
If you would like more information concerning Applications or Interchanging ROLLWAY roller bearings, **just call: 1-800-626-2120** and ask any of the **customer service representatives**. If they are unable to answer your questions they will be happy to forward your call to one of our application or product engineers for immediate assistance.



Cylindrical Roller Bearings For Table Roll & Line Shaft Applications

Table Roll Bearings... Rollway's cylindrical roller bearing used in table roll applications are tough and designed to last in this severe application. Our cylindrical **table roll bearings** (style A) are primarily used on the floating or expansion end of the roll. The design of the inner race provides for expansion that normally occurs as the rolls heat up and deflect under load. Some table roll bearings are supplied with the inner race wider than the outer race to provide for maximum expansion.

Line Shaft Bearings... Our cylindrical **line shaft bearings** (style B) are used to support the long line shafts that drive the table rolls, the bearings that are positioned between the table roll drive gears. These usually have inch dimension bore diameters with extended and slotted inner rings. The special inner race design allows for maximum shaft expansion, the slot enables the race to be secured to the shaft, reducing the chance of the race slipping when the line shaft reverses direction. Many of our table roll and line shaft bearings are supplied with unmounted internal clearances greater than standard for use in applications requiring heavy shaft fits.



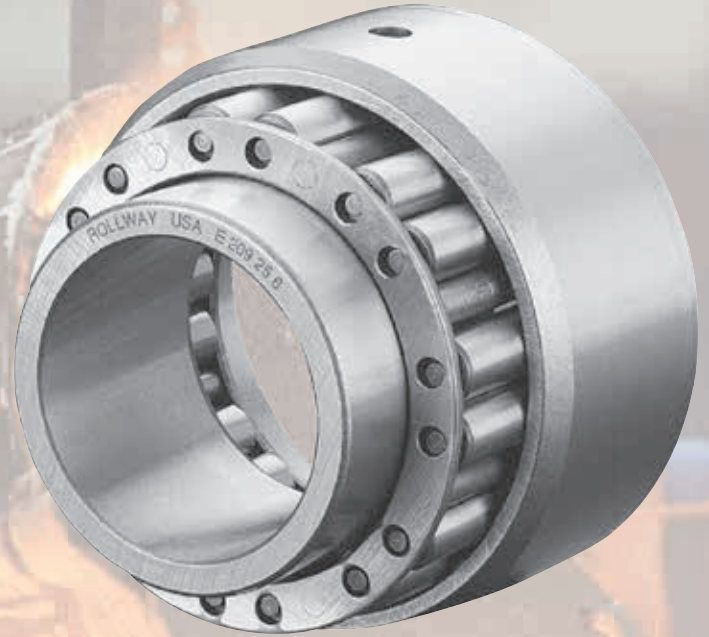
The table on the following page is a listing of Rollway's 5200 series cylindrical radial roller bearings that are used in these applications.



ROLLWAY 5200 SERIES CYLINDRICAL ROLLER BEARINGS

Bearing Number	Style	Bore	Outside Diameter	Width	Inner Ring Width	Notch Width	Notch Depth
E-5218-U	A	3.543	6.299	2.063	2.063	-	-
E-5218-U-102	A	3.543	6.299	2.063	2.500	-	-
E-5218-U-103	B	3.501	6.299	2.063	2.500	0.895	0.349
E-5219-U	A	3.740	6.693	2.188	2.188	-	-
E-5219-U-112	A	3.740	6.693	2.188	2.750	-	-
E-5219-U-113	A	3.740	6.693	2.188	2.188	-	-
E-5220-U	A	3.937	7.087	2.375	2.375	-	-
E-5220-U-106	A	3.937	7.087	2.375	3.000	-	-
E-5220-U-105	B	4.001	7.087	2.375	3.000	1.020	0.380
E-5220-U-119	B	4.001	7.087	2.375	4.375	1.000	0.400
E-5222-U	A	4.331	7.874	2.750	2.750	-	-
E-5222-U-106	A	4.331	7.874	2.750	3.250	-	-
E-5222-U-102	B	4.501	7.874	2.750	3.250	1.145	0.380
E-5224-U	A	4.724	8.465	3.000	3.000	-	-
E-5224-U-103	A	4.724	8.465	3.000	3.500	-	-
E-5224-U-105	B	4.751	8.465	3.000	3.500	1.145	0.380
E-5226-U	A	5.118	9.055	3.125	3.125	-	-
E-5226-U-104	A	5.118	9.055	3.125	3.625	-	-
E-5228-U	A	5.512	9.843	3.250	3.250	-	-
E-5228-U-105	A	5.512	9.843	3.250	3.750	-	-
E-5228-U-108	B	5.438	9.843	3.250	5.125	1.395	0.380
E-5228-U-109	B	5.500	9.843	3.250	3.750	1.395	0.380
E-5230-U	A	5.906	10.630	3.500	3.500	-	-
E-5230-U-102	B	5.939	10.630	3.500	4.125	1.525	0.505
E-5232-U	A	6.299	11.417	3.875	3.875	-	-
E-5232-U-104	A	6.299	11.417	3.875	4.500	-	-
E-5232-U-103	B	6.001	11.417	3.875	4.500	1.562	0.500
E-5234-UMR	A	6.693	12.205	4.125	4.125	-	-
E-5236-UMR	A	7.087	12.598	4.250	4.250	-	-
E-5236-UM R-103	A	7.087	12.598	4.250	5.000	-	-
E-5236-UM R-104	B	7.001	12.598	4.250	5.000	1.775	0.448
E-5238-UMR	A	7.480	13.386	4.500	4.500	-	-
E-5238-U-102	A	7.480	13.386	4.500	5.250	-	-
E-5240-UMR	A	7.874	14.173	4.750	4.750	-	-
E-5240-UMR-101	A	7.874	14.173	4.750	5.750	-	-
E-5244-UMR	A	8.661	15.748	5.250	5.250	-	-
E-5248-UMR	A	9.449	17.323	5.750	5.750	-	-
E-5248-U-101	A	9.449	17.323	5.750	7.000	-	-

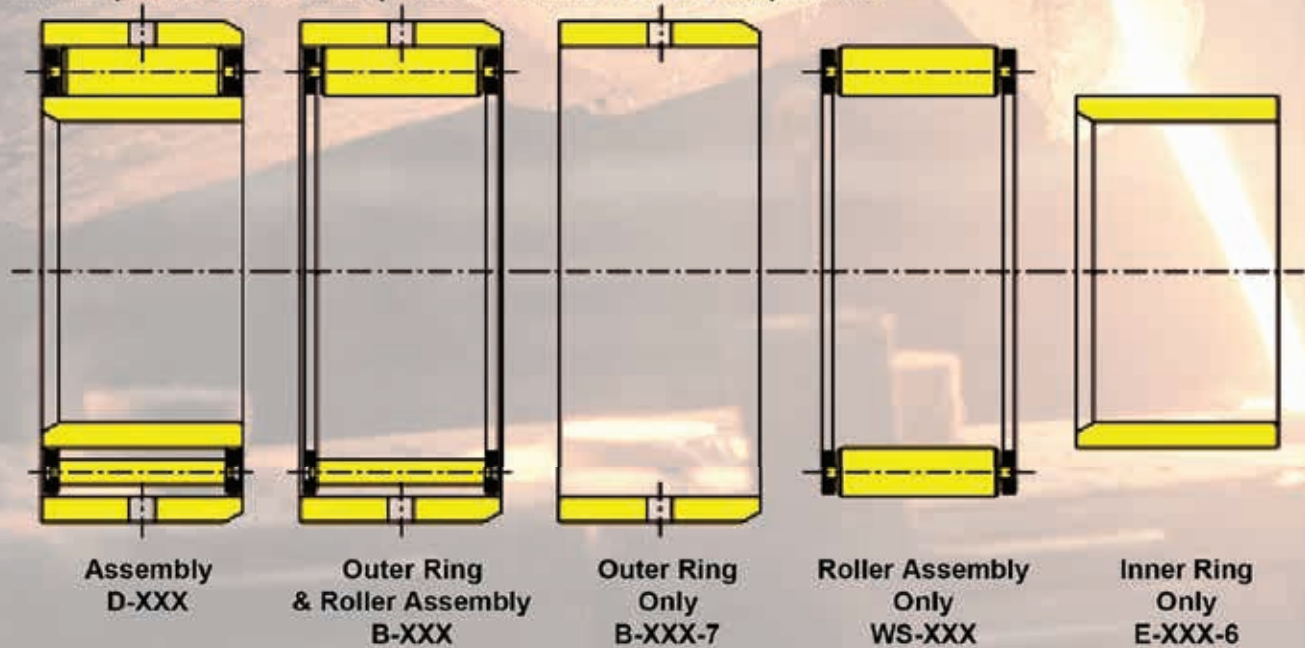
Steel Cage Journal Bearings For Table Rolls, Line Shafts & General Mill Service



ROLLWAY'S Steel Cage Journal Bearings are the same basic 200 and 300 series "3 piece bearings" that have been supplied for over 50 years.

- They are available as complete assemblies or as components.
- **ROLLWAY** hardens all components to Rc 58 min.
- Roller assemblies have flush ground ends.
- All outer rings are supplied with oil holes.

ROLLWAY Steel Cage Journal Bearings are designed and built to industry standards. They can be purchased as complete assemblies or as components



Cylindrical Roller Bearings For Mill Motor Applications



Mill Motor Cylindrical Roller Bearings

- L-1300-U series have segmented steel retainers.
- MUL-200 series have machined brass retainers.

Industry Comparison Table

Rollway Number	General Electric Number	Westinghouse Electric Number	Reliance Electric Number	Frame Size	HP	RPM
L-1309-U	8832705-P1	1297157	4841-9BC	402	5	900
L-1310-U	8832705-P2	1412237	4841-10BD	602	7.5	800
L-1311-U	8832705-P3	1297158	4841-11BA	603	10	725
L-1313-U	8832705-P4	1297159	4841-13BE	604	15	650
L-1315-U	8832705-P5	1412245	4841-15BA	606	25	575
L-1317-U	8832705-P6	1297161	4841-17P	608	35	525
L-1319-U	8832705-P7	1297162	4841-19M	610	50	500
L-1321-U	8832705-P8	1412238	4841-21M	612	75	475
L-1323-U	8832705-P9	1449584	4841-23M	614	100	460
L-1326-U	8832705-P10	1297165	4841-26M	616	150	450
L-1328-U	8832705-P11	1412242	4841-28M	618	200	410
MUL-230-007	8832705-P12	-	4841-30M	620	275	370
MUL-232-007	8832705-P13	-	-	622	375	340
MUL-236-007	8832705-P14	-	-	624	500	320

Regal Power Transmission Solutions and Rollway Bearing are not affiliated with any of the foregoing companies.



*If you would like more information concerning Applications or Interchanging ROLLWAY roller bearings, **just call: 1-800-626-2120** and ask any of the **customer service representatives**. If they are unable to answer your questions they will be happy to forward your call to one of our application or product engineers for immediate assistance.*



ROLLWAY.

Regal Power Transmission Solutions
7120 New Buffington Road
Florence, KY 41042
Customer Service: 800-626-2120
Fax: 800-262-3292
Technical Service: 800-626-2093

www.RegalPTS.com

APPLICATION CONSIDERATIONS

The proper selection and application of power transmission products and components, including the related area of product safety, is the responsibility of the customer. Operating and performance requirements and potential associated issues will vary appreciably depending upon the use and application of such products and components. The scope of the technical and application information included in this publication is necessarily limited. Unusual operating environments and conditions, lubrication requirements, loading supports, and other factors can materially affect the application and operating results of the products and components and the customer should carefully review its requirements. Any technical advice or review furnished by Regal Beloit America, Inc. and its affiliates with respect to the use of products and components is given in good faith and without charge, and Regal assumes no obligation or liability for the advice given, or results obtained, all such advice and review being given and accepted at customer's risk.

For a copy of our Standard Terms and Conditions of Sale, Disclaimers of Warranty, Limitation of Liability and Remedy, please contact Customer Service at 1-800-626-2120. These terms and conditions of sale, disclaimers and limitations of liability apply to any person who may buy, acquire or use a Regal Beloit America Inc. product referred to herein, including any person who buys from a licensed distributor of these branded products.

Rollway is a trademark of Regal Beloit Corporation or one of its affiliated companies.
©2015 Regal Beloit Corporation, All Rights Reserved. MCB15033E • Form# 9435E • Printed in USA

A Regal Brand

REGAL

www.regalbeloit.com